



2 July 2018

ASX Announcement

STRONG LITHIUM-BERYLLIUM ANOMALY AT LAKE DUNDAS

Woomera Mining Limited's (ASX: WML, Woomera) EL63/1804 is located approximately 160 km south-south-east of Kalgoorlie in the Dundas Mineral Field in Western Australia. The tenement covers the north-eastern portion of Lake Dundas and is underlain by Archean granite, granitic gneiss and minor mafic intrusive rocks.

The Lake Dundas tenement was first applied for by Liquid Lithium Pty Ltd because of its potential for lithium brines. Liquid Lithium Pty Ltd based the potential for lithium brines on work conducted by Geoscience Australia that highlighted Lake Dundas as having one of the highest lithium concentrations (93-149ppm) in Australia.

Lake Dundas has many of the elements that producing lithium brine deposits share, namely:

- occurs in an arid climate;
- is part of a closed basin;
- has experienced tectonically driven subsidence;
- has associated igneous or geothermal activity;
- has suitable lithium source rocks;
- has one or more aquifers; and
- sufficient time to concentrate a brine.

Woomera Mining Limited acquired the assets of Liquid Lithium Pty Ltd (and another company - Volt Lithium Pty Ltd) on 5th March 2018 and in doing so acquired 10 tenements and tenement applications in Western Australia that are prospective for hard-rock lithium and lithium brines.

A review of open file information identified a significant lithium-beryllium anomaly (peak values of 71.4 ppm lithium and 4.4 ppm beryllium) adjacent to and within Woomera's EL63/1804. The lithium-beryllium anomaly was identified from a comprehensive soil auger sampling program conducted by AngloGold Ashanti Australia in 2000 consisting of over 7,212 samples.

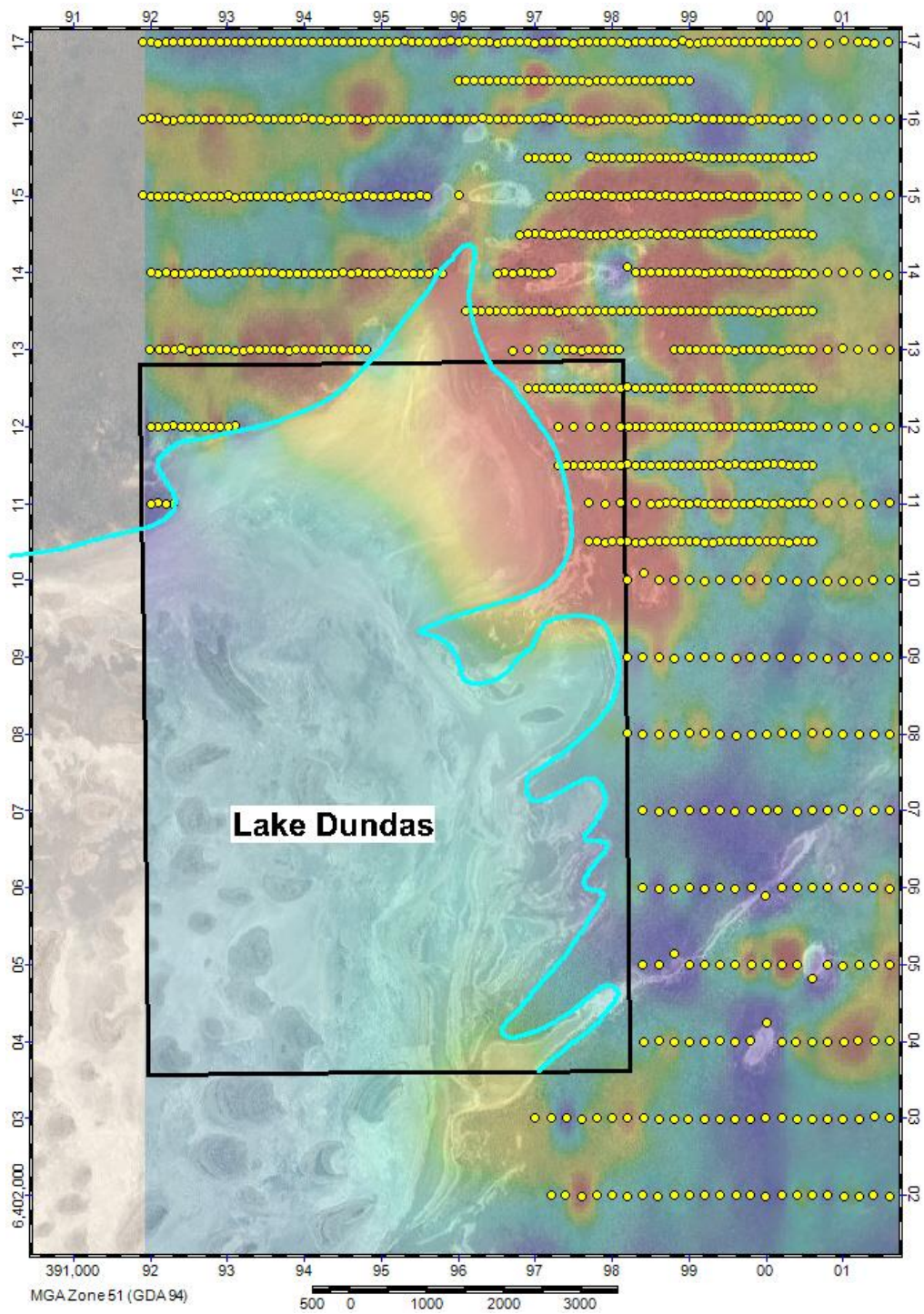


Figure 1. Location of Woomera Mining's EL63/1804 relative to comprehensive historic auger soil sampling

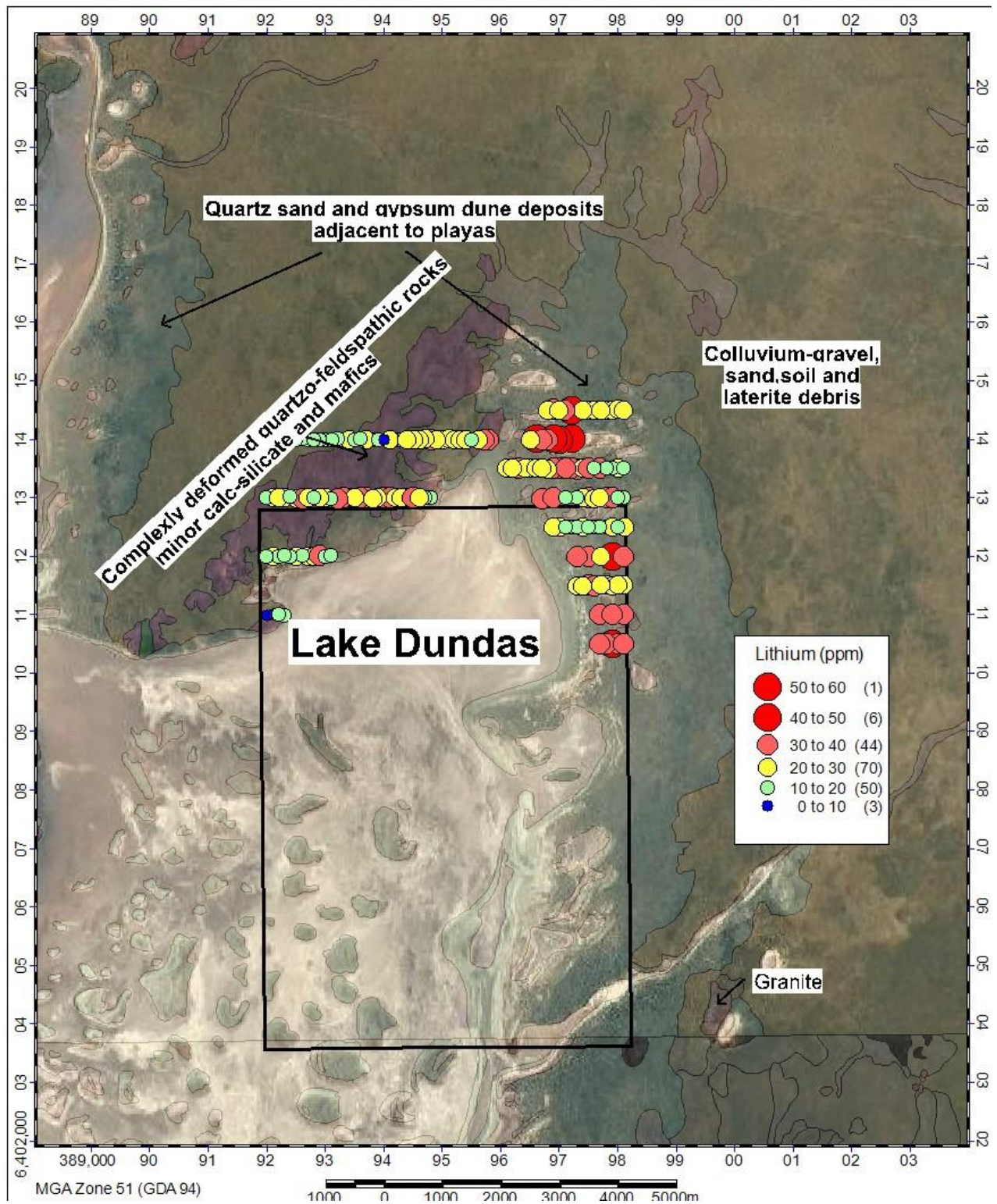


Figure 2. Historic auger soil sample lithium values in ppm

The presence of such a pronounced lithium and beryllium anomaly in the north-eastern portion of the tenement suggests that hard-rock lithium-pegmatites might be present on the edge and potentially under the lake.

COMPETENT PERSONS STATEMENT

The exploration results reported herein, insofar as they relate to mineralisation, are based on information compiled by Mr Gerard Anderson, Managing Director of Woomera Mining Limited. Mr Anderson is a Member of the Australasian Institute of Mining and Metallurgy who has over forty-two years of experience in the field of activity being reported. Mr Anderson has sufficient experience which is relevant to the styles of mineralisation and types of deposit under consideration and to the activity that he is undertaking to qualify as a Competent Person as defined in the 2012 Edition of the 'Australasian Code for Reporting of Exploration Results, Mineral Resources and Ore Reserves' relating to the reporting of Exploration Results. Mr Anderson consents to the inclusion in the report of matters based on his information in the form and context in which it appears.

Gerard Anderson
Managing Director
Woomera Mining Limited

Peter Taylor
Investor Relations
0412 036 231
Peter@nwrcommunications.com.au

About Woomera Mining Limited

Woomera Mining Limited (Woomera) is an ASX listed exploration company based in Adelaide, South Australia with an extensive minerals tenement portfolio prospective for Copper, Lithium, Gold, Uranium, Iron Ore, Nickel and Cobalt. The Woomera tenement package includes four tenements in the Musgrave Province of South Australia with several drill ready targets (**Musgrave Project**) which is the subject of a binding Heads of Agreement with Oz Minerals (ASX: OZL) where Oz Minerals can elect to expend up to \$7.5m in exploration to gain up to 75% of the Joint Venture in the Musgrave Province with Woomera. Five tenements make up the Gawler Craton package (**Gawler Craton Project**) which are prospective for IOCGU deposits, Cu-Ni-Co deposits, RE and Precious Metals. Woomera's tenement portfolio also includes 8 granted tenements and two tenement applications including 3 tenements in the Pilbara region of WA (**Pilgangoora Lithium Project**), 2 lithium tenements near Ravensthorpe (**Mt Cattlin Lithium Project**) and several WA lithium brine prospects over Lakes Tay, Sharpe, Dundas, Cowan and Dumbleyung (**Lakes Lithium Projects**).